

Leading for system wide practice through the SA Health Nursing & Midwifery Professional Practice Framework - SPNF Raratonga



**Government
of South Australia**

SA Health



Presentation Content

- > Background
- > Caring with Kindness: Nursing and Midwifery Professional Practice Framework
- > Evaluation Research

South Australia



What is the Professional Practice Framework?



CULTURE

We want to demonstrate a culture where the person is at the centre of every interaction, and which is underpinned by a philosophy of caring with kindness.

VALUES AND BEHAVIOURS

Our values and behaviours are the living breathing evidence of our nursing and midwifery Vision.

Person Centred I will:

- > include and involve patients in conversation/decisions and acknowledge their needs, values, preferences and perspective
- > have a knowledge of my patient's history and enable them to be a partner in their care
- > communicate as if the patient is in the room.

Respect I will:

- > negotiate with patients in the way I communicate and care for them
- > be genuine when I am interacting with patients and others
- > respectfully address all instances where my colleagues are not displaying the behaviours required for a culture of caring with kindness.

Integrity I will:

- > treat everyone as an individual, not a diagnosis, and never 'label' staff or patients
- > be transparent about what I undertake to do and I deliver on promises I make
- > actively support my colleagues to debrief when facing challenging circumstances.

Accountability I will:

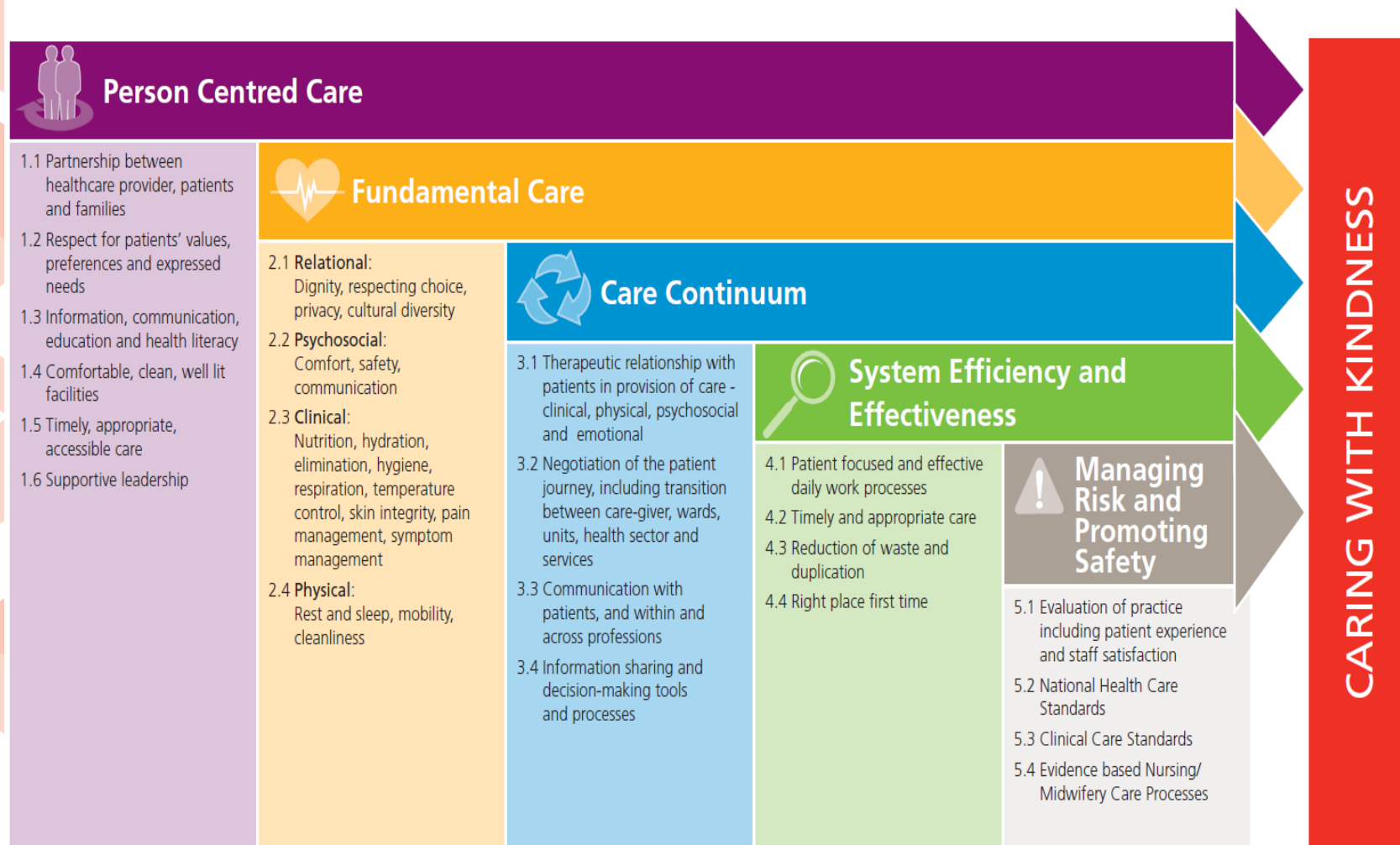
- > never walk past a standard of care that is unacceptable - the standard I walk past is the standard I accept
- > admit and seek advice when I don't know, or am outside my scope of practice
- > work proactively to find a solution if I am unable to meet a request.

PROFESSIONAL PRACTICE FRAMEWORK COMPONENTS

The components will help us to achieve our vision through influencing the required values and behaviours that result in an exemplary culture. They form the foundations of the Professional Practice Framework to inform and influence our day to day work at the operational/patient level.



Nursing and Midwifery Professional Practice Framework



Professional Practice Framework Interactive Resource



Introduction	page 1
Culture, Values & Behaviours	page 2
Practice Evaluation Context	page 3
Person Centred Care	page 4
Person Centred Care RECORD	page 6
Fundamental Care	page 10
Fundamental Care RECORD	page 11
Care Continuum	page 13
Care Continuum RECORD	page 14
System Efficiency and Effectiveness	page 17
System Efficiency and Effectiveness RECORD	page 18
Managing Risk and Promoting Safety	page 22
Managing Risk and Promoting Safety RECORD	page 23

Please DO NOT save changes to the original document.
To save your changes, please use the 'save as' function, and save your file to your LHN identified drive.

Evaluation of the Framework

- **The Reasearch Team**

- Dr Terri Gibson, Senior Lecturer, School of Nursing & Midwifery, UniSA
- Ms Julie Brown, Senior Nursing & Midwifery Policy Officer SA Health, Adjunct Lecturer UniSA
- Associate Professor Rachael Vernon, School of Nursing & Midwifery, UniSA

- **Aim**

- To evaluate the extent to which the Framework has been adopted to guide the delivery of nursing & midwifery services in SA Health.

- **Research Design**

- qualitative descriptive research design (Sandelowski, 2010) informed by a critical review of relevant literature.

- **Findings from the research will inform**

- ongoing development of the framework
- future nursing and midwifery policy.



QUESTIONS?

The Professional Practice Framework can be accessed via the SA Health Nursing and Midwifery Office website:

www.sahealth.sa.gov.au/NursingandMidwifery