

Ki te ahu pehea tatou



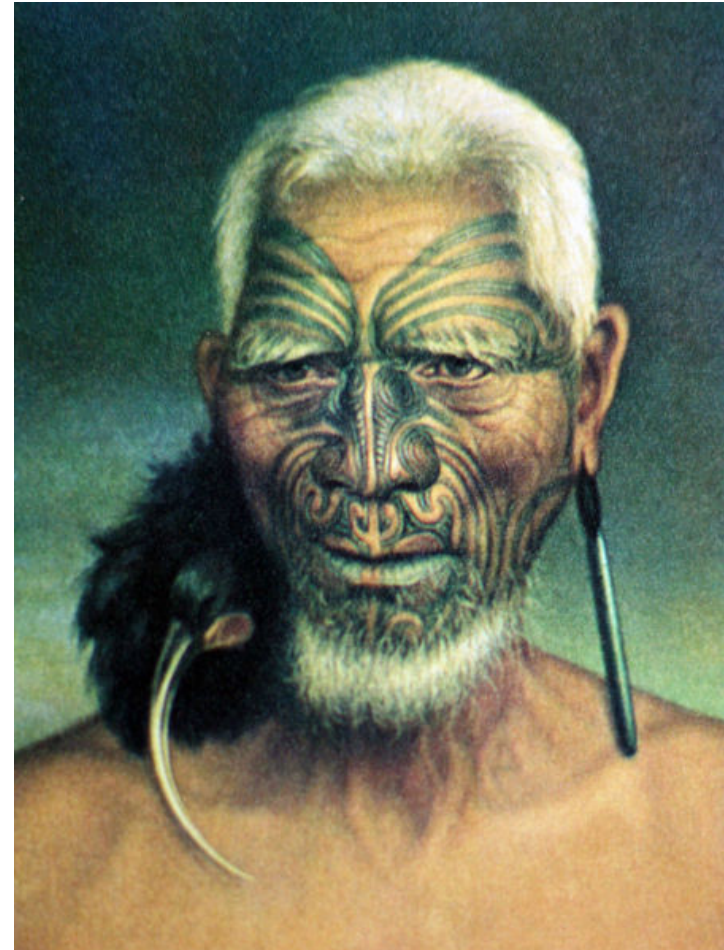
Te Kaunihera o ngā Neehi Māori

# He aha kei muri, vhe aha kei mua

- Liberal Party – 1891 - 1912
- Ballance – Liberal Party
- Richard Seddon – Followed
- William Pember Reeves – Politian and Theorist
- Stated: ‘Māori are the finest race of savages in the world he has seen’

# Sooth the bed of a dying race

- 1837 – 1900
- At no very distant period the downward trend trend would leave the country destitute of a single aboriginal inhabitants (James Busby, 1837)
- Unless the down ward course be arrested..... There will be no survivor of the race Native Minister 1878)

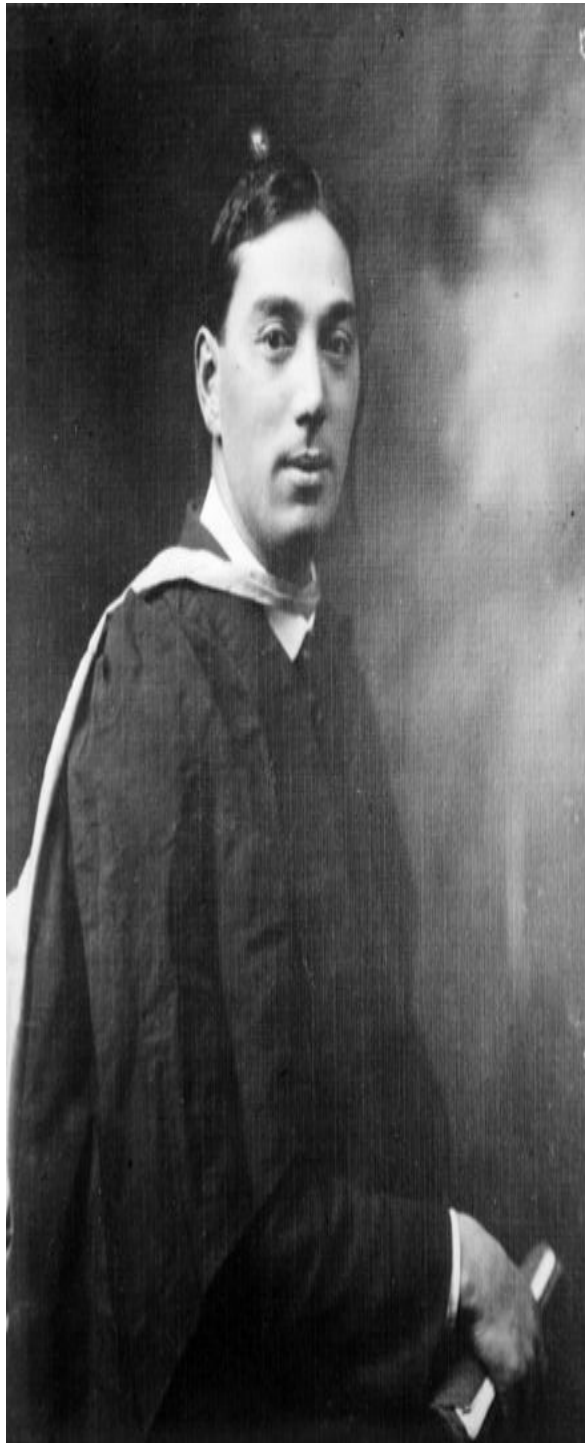


# Sooth the bed of the dying race

- Urgent need to collect ethnographical material, in 25 years from now remnants will be left (Walter Buller, 1884)
- The races will be 'One' (Charles Heaphy, 1842)
- Amalgamate – pakeha, superior race      Maori – Strong, weak – slowly (James Buller, 1857)
- What has been and never more will be

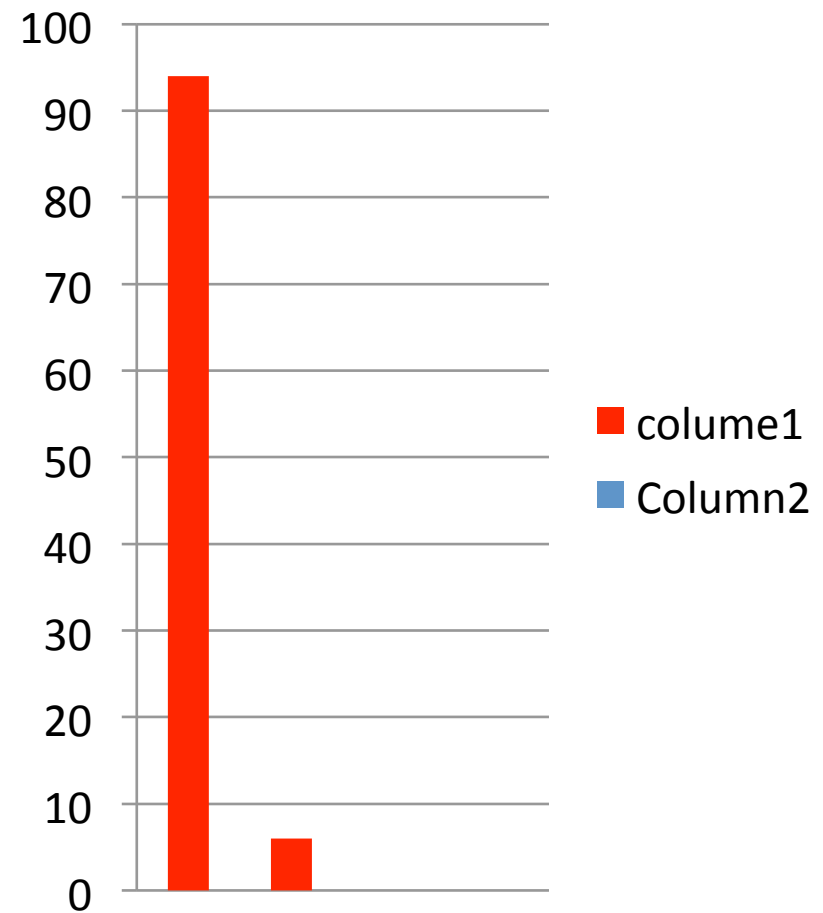


# Māori Health



# Māori

- 47,129 Registered Nurses on New Zealand (NCNZ, 2010)



# Te Kaunihera o ngā Neehi Māori



# Warea ki te Ara o te Ora

Waerea te ara  
Waerea ki te ora  
Tatou nga lwi katoa  
Whaia te oranga

Rapua i runga ia Ihu  
Rapua i nga Maunga  
Ko koe ra Tawhirimatea  
Te hua rahi e

Kua oho te Ao  
Kua kokiri tia  
Ki tona manawa  
He ngakau e He ngakau e

Hauora noa  
Te whatumanawa  
Tiaho ra  
ki nga to pito e wha  
o Aotearoa nui